

Consort Lava Lamp Varieties

(by Craig French, aka “*Fogrider*”, with many thanks to all the collectors who helped out with information and photographs)

Often overlooked by collectors, the Consort line of lava lamps consists of at least 30 distinct models, accessory packs, and globe colors. Some models are extremely rare. Some have never been seen in person by collectors!

Consorts are beautiful little lava lamps. Apart from the usual issues of cloudy liquid in the lava models (which can often be filtered out with the right equipment), they often suffer from a condition where the lava floats to the top and stays there. This condition can usually be corrected by gradually replacing some of the liquid in the lamp with distilled water (which is lighter than the standard liquid found in lava lamps) until proper flow is restored to the lamp.

Transplanting the contents of a newer lamp to an old Consort globe isn't recommended, as it's often impossible to get the heavier lava found in most larger lamps to flow in the relatively cool running Consort models.

Lava lamps that use the Consort globe have a small metal reflector which sits around the light bulb in the cup. It's often lost, and therefore missing on some Consorts that are for sale.

Globe diameters varied slightly over the years. Not all Consort globes will fit into other Consort cups.

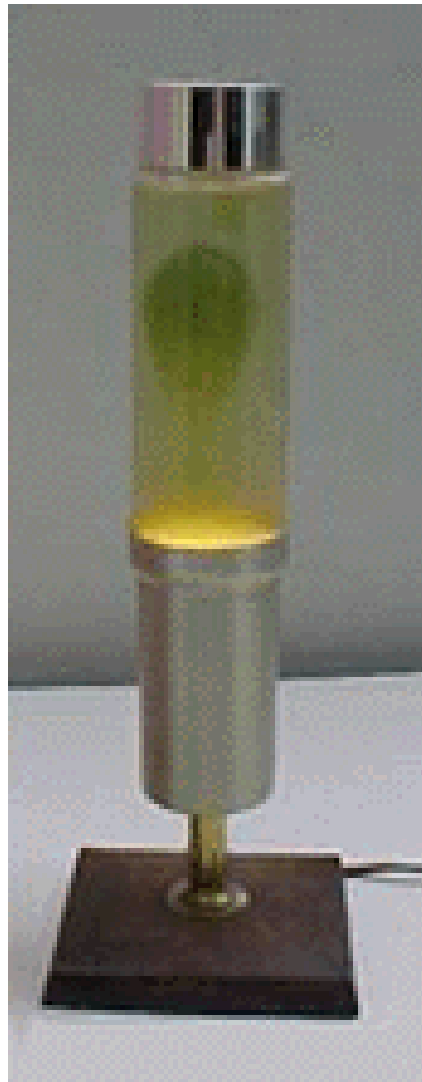
Consort lava colors tend to be one of three combinations: red/clear, orange/yellow or green/blue. Another color that was used in the Consort series of lamps is “Champagne Mist”, which was cream-colored wax in cloudy, pale amber liquid. This was offered instead of orange/yellow in all US lava lamps (except the 52 oz. Century models) in 66-67; in 68 on, orange/yellow became one of the main three colors.

Plastic Consort caps can be easily broken if over tightened, and the finish often reacts badly to chemical cleaners, including alcohol based glass cleaners. Many silver looking caps are in fact gold colored caps that have faded over the years.

Many lamps that use the Consort globe are quite rare. No *Meditation* lamps have surfaced yet. Only two *Executive* lamps have been seen. A handful of *Princess* and *Astro* lamps have been spotted. However, the basic square based Consort lamp is quite common, and no collection is complete without one.

Other, as yet unknown Consort models may surface one day. Maybe another GemLite model or perhaps another variety of square based Consort (**see page5 for a newly discovered variety, first spotted in 2012**).

Wooden Based Consort.



Standard Wooden Based Consort

Early production basic Consort lava lamp models had a gold finish on the cup, post, and cap. The square base was made of walnut, and the post was straight.

Later production basic Consort models also had a gold finish on the cup, post, and cap, and a wooden base. The post was flared at both ends.

The next generation of standard Consort lamps had a faux wood finish brown plastic base that sloped away on the sides. The post was hourglass shaped.

Some interesting varieties of the basic square based Consort exist:

First, is this unusual Consort lamp made in August 1971. The cup, stem, and cap are polished aluminum (referred to as a “chrome” finish in a 1972 ad). The lamp uses a square shaped plastic faux wood base, but the base is black in color rather than the usual brown color. The warm glow of the lava contrasts nicely with the cold look of the silver and black lamp. This model is referred to as a “Nordic” in a 1972 gift catalog advertisement.



Nordic Consort (black plastic base)

Another variety is this aluminum metal square-based consort. The stem and cup are highly polished. I believe this lamp is also called a Nordic Consort.



Nordic Consort (metal base)

Other varieties are rumored to exist, or have been spotted in online auctions, including a marbled base, a chromed flared base, and a round trumpet flared base in faux wood.

LIGHT OF A MILLION MOVING SHAPES . . .
Dazzles the imagination with ever-changing motion. Warm, friendly glow makes them perfect decorator, T.V. night, and accent lights. The perfect gift. AC/DC. UL and CSA approved.

Lava Lite

[A] NORDIC
Greek, modern styling . . . with fascinating motion. Just perfect for the study or den, so right for the executive suite. Handsome jet-black ebony finished base, chrome finished cup and cap. 13 1/4" high, 5" square base. 3 lbs. H90-887F, Green lava/Blue liquid. H90-888F, Red lava/Clear liquid. Retail \$19.95 Only \$14.95

[B] ENCHANTRESS DECORATOR
Velvet-touch light with plush velvet-tone finish. Washable and scratch-proof. 16 1/2" high, 4 1/4" dia. Mexican Avocado base. 4 1/2 lbs. H90-978F, Lime lava/Green liq. Retail \$22.95 Only \$16.50

[C] CENTURY
Star points of light gleam through the pierced satin-brass finished base. 17" high, 6" dia. 7 lbs. H90-885F, Red lava/Green liquid. H90-887F, Orange lava/ Yel. liq. H90-888F, Green lava/Blue liq. H90-889F, Yellow lava/Turq. liq. H90-890F, Red lava/Clear liquid. Retail \$29.95 Only \$19.95

[D] MEDITERRANEAN
Exotic Spain inspires a creation with the mystery of Aladdin's lamp, the motion magic of a million moving moods. Superbly scrolled wrought iron jet-black base. A hypnotic spellbinder . . . Stands at full 13 1/2" high, 4 1/4" dia. 5 1/2 lbs. H90-890F, Red lava/Clear liquid. Retail \$19.95 Only \$14.95

[E] ENCHANTRESS PLANTER
Tall, graceful planter light with a myriad of moving shapes. Satin gold finished metal base and cap. Complete with artificial foliage 16" high. Bowl 6 1/2" dia. 4 1/2 lbs. H90-978F, Green lava/Blue liq. Retail \$23.95 Only \$16.95

SILVER SPINNER KALEIDOLITE
Psychedelic sensation! Earle light flickers through the frosted white 6" globe in endless shapes, colors and shadows. Satin-silver finish upon aluminum base is 11 1/2" high, 6" dia. 2 1/4 lbs. Retail \$15.95. H90-991F Only \$10.95

A 1972 Gift Catalog ad showing the Nordic Consort, along with several other interesting lava products.

Lava Lite

The decorator life of a million moving shapes

THE COMMANDER
The Commander features a 32 ounce "Lava" filled bottle in the familiar conical Lava Lite designed base. Smartly styled black finished base and cap makes this light the ideal touch for home or office, den or recreation room. Perforated base gives a statelike appearance especially in dimly lighted areas. Its ever-changing shapes amaze, amuse and enthrall everyone. Available in Red and Clear liquid or Green and Blue liquid. Overall height 16 1/2", 6 1/4" diameter at base. Ship. wt. 7 lbs. Sugg. Retail 9416EE1850—Red/Clear liquid \$29.95 9417EE1850—Green/Blue liquid \$29.95

THE EXECUTIVE
The Executive has sleek, modern styling with a truly luxurious flavor. Modern brass base is the ideal touch for home or office and executive suite with its stately and elegant styling. Has a fascinating motion. Available in Green and Blue liquid or Orange and Yellow liquid. Overall height 15 1/4"—5 1/4" square base. Ship. wt. 3 lbs. Sugg. Retail 9418EE1516—Orange/Yellow liquid \$24.95 9418EE1516—Green/Blue liquid \$24.95

Decorative Lamps for Home or Office

539

The "Executive". An interesting Consort variety. Similar to the Nordic, but with a brass colored base. This picture is from a 1972 gift catalog. The author spotted this ad in 2012. Oddly enough, the name "Executive" is also used to describe the pen holder type Consort on page 15.

Other lava lamps that use the Consort globe include:

The *Child's Nite Lite*. A square based Consort lamp with a juggling clown embossed on the globe. This lamp is often called the "*Clown Consort*" by collectors.



Child's Nite Lite

Model 3100/3200 (3000 Series).

4 Legged candle powered lava lamp (Early 1966 model).

The famous 4 legged candle powered lava lamp. One of the rarest lava lamps! Up until October 2011 it was not known whether this lamp actually existed or not! Early Lava sales brochures hinted at its existence. As of October 2011, only one of these lamps was known to exist!

Model 3100 was known as the “**Continental Gift Pack**” (a complete lamp in silver finish with two extra candles). Silver finish.

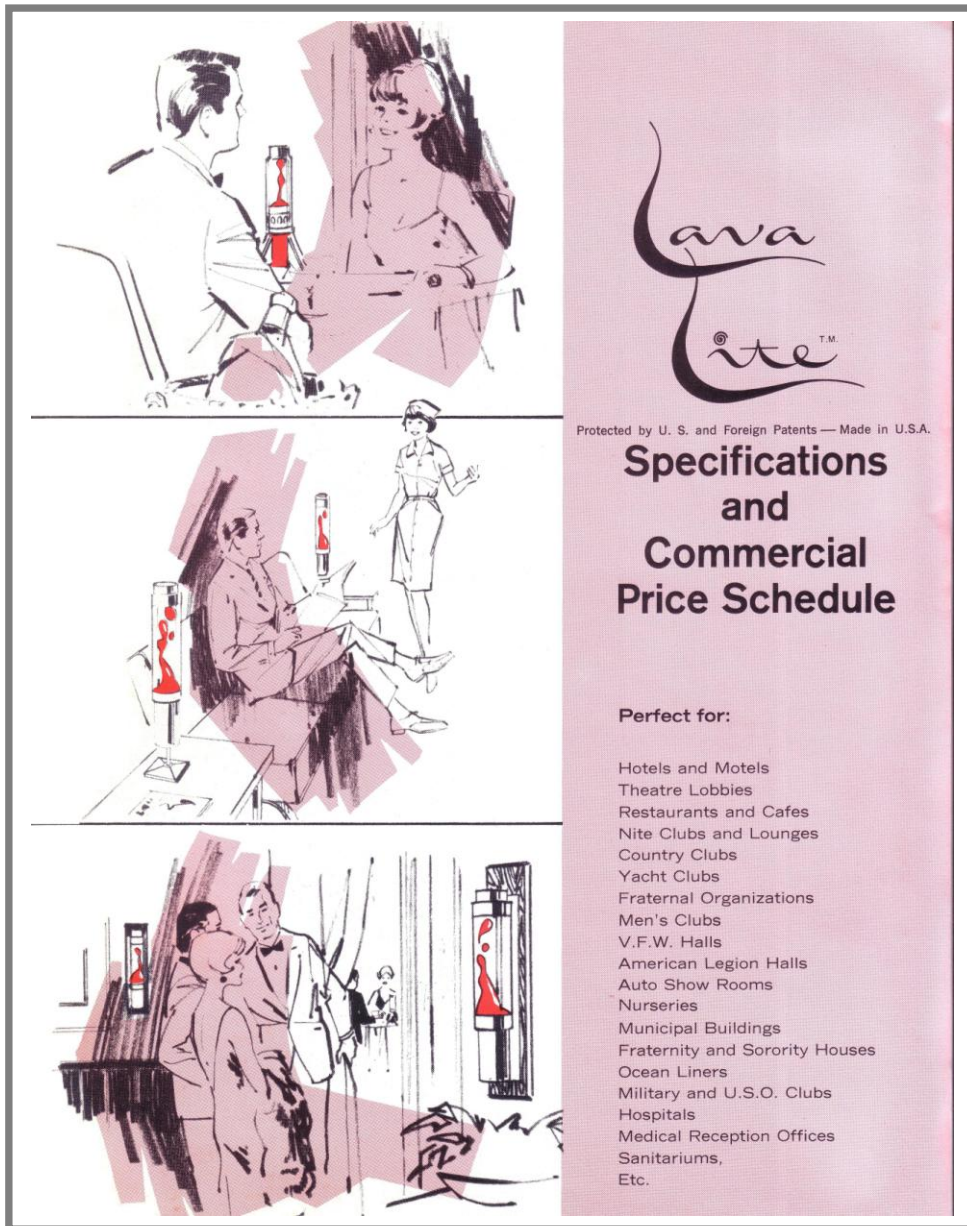
Model 3200 was known as “**The Savoy Commercial Model**”, and was marketed to the restaurant trade). Gold finish.



Three color combinations were available: red lava/clear liquid, green lava/blue liquid, and “Champagne Mist” (crème lava in a hazy pale amber liquid).

Candle bases came in 3 colors: red, green, or yellow, matching the three globe colors.

The glass globes were meant to be used once, then tossed away and replaced with a new glass globe. Perhaps this explains why this model is so rare!



Note the 4 legged candle powered lamp in the background of the upper picture in this 1966 lava sales brochure.

Pineapple Textured Continental lava lamp.

Early Lava sales brochures show a deeply textured candle powered model with a base that looks like the bottom of a pineapple. As of 2011, no known examples of this lamp have yet surfaced. It is believed that this lamp pre-dates the lamp above.

(Picture not available)

Later Model 3100. Referred to as the “**Continental Gift Pack**” (a complete lamp in silver finish with two extra candles). Glass candle holder was clear glass with a “frosted” finish sprayed onto the glass. The candle holder screwed into a metal base, and a metal globe holder screwed onto the top of the candle holder.



Later Model 3200. Similar to the 3100. Referred to as the “**Savoy Commercial Model**”. Marketed to the restaurant trade. Bulk candle packs available. A “Happy Occasion Pack” (#3295) along with bulk parts packs, were available for the Savoy model.

**THE SAVOY
3000 SERIES**

Model 3200—Non-electric model is cordless and carefree, uses minimum of table space, costs only pennies to operate. Makes a truly remarkable conversation piece on any table setting, —intimate or otherwise. With its attractive white frosted glass candle containers, the Savoy is perfect for restaurants, night clubs and lounges. 14" high and 5 1/2" in diameter at the widest point of the base.

LAVA COLORS			
MODEL	BASE, COLLAR & CAP COLOR	LAVA COLORS BASE LIQUID	PRICE
3212	Gold	Orange Yellow	
3215	Gold	Champ. Mist	\$14.95
3216	Gold	Red Clear	
3222	Silver	Orange Yellow	
3225	Silver	Champ. Mist	\$14.95
3226	Silver	Red Clear	

Savoy 3000 Series LAVA LITES are bulk packed in 2 cartons as follows:
 1 Carton 12 each—Lava Globe Units
 12 each—Screw on Collars
 12 each—Screw on Metal Base
 1 Carton 24 each—Replacement Candles
 Shipping Weight of Both Cartons, consisting of 12 Globes, Collars, Bases and 24 Candles 64 lbs.
 Replacement Candles (bulk packed 24 to a carton) .75 each.
 Shipping Weight Replacement Candles (bulk packed 24 to a carton) 36 lbs.

HAPPY OCCASION PACK #3295 — Champagne/Champagne Mist Color. Now make your LAVA LITE fit the holiday or occasion. Pack contains three "occasion" globe units . . . one each of:
 Happy Birthday
 Happy Anniversary
 Happy Holiday
 Shipping Weight of three globes, 5 lbs. . . . Pack Price \$27.00

OUR PRESTIGE COLLECTION OF DECORATOR LIGHTING WILL NOT BE OFFERED TO WHOLESALE CATALOG OR DISCOUNT TRADE



1966 Lava commercial sales brochure showing the “Happy Occasion Pack” and bulk parts packs for Savoy. Neither the Happy Occasion Packs, nor any of the bulk glass globes, metal bases, metal collar or lava globe packs have ever been seen by the collecting community.

Both of the above models originally came in silver and gold finish, but in gold finish only later on.

The **Capri**. Available in either silver or gold finished base and cap.

Lava Lite



Capri

The *Princess* (Model 2100). The much coveted wall mounted Consort lamp.



Princess

The *Mediterranean* (model 2940). Black scrolled metalwork base and black plastic cap.



Mediterranean

The *Windsor*. A Consort model with a raised round metal base in a faux wood finish.



Windsor

The *Meditation series (models 2300 and 2400)*. Rarest of the rare. One has a Christian symbol embossed on the globe; the other has a Jewish symbol. These lamps are also known as "*Prayer Lites*"). As of 2011 no examples of either of these lamps have been documented. Rare indeed!!



Meditation Series

The *Executive*. A Consort Globe mounted on a walnut pen-holder base. Extremely rare. I've only seen one example of this lamp.



Executive

The Expo '67 (sometimes called the “Apollo” or “Volcano”). A Consort globe in a black tapered base; the Montreal Expo '67 logo is embossed on the globe). It's believed that this lamp was marketed at the 1967 world exposition in Montreal, Canada. This is a very rare lamp. I know of 2.



Expo '67 (or “Volcano”) Consort



The 1960's rock group the “Blues Magoos” pictured with an Imperial lava lamp. They're holding Psyche-De-Lites; lamps marketed by the band. They look very much like the Expo '67 lamps. It is unknown if any Psyche-De-Lites have ever surfaced!

The *Astro Lava Lite (Model 2500)*. An unconventional lamp consisting of a round rough-brushed aluminum cylinder attached to a fairly flat round base. A flat solid brass band winds 2 ½ times around the base cylinder and is held to the cylinder by two brass screws and nuts. The cap is gold colored. The rarity of this lamp is about on par with the Executive. The Astro Lava Lite dates to sometime in the mid- to late-70s. A b/w, undated catalog illustration for one lists the standard colors (orange/yellow, red/clear, green/blue).



Astro Lava Lite

GemLite lamps (large, fast moving, square aluminum particles in a clear liquid) that use the Consort globe include the following models:

The *Confetti*. Model 650. A GemLite globe mounted on a flared conical silver colored base).



Confetti

The original clear model 650 included an optional sticker that fit on the base of the globe and changed the color of the globe.

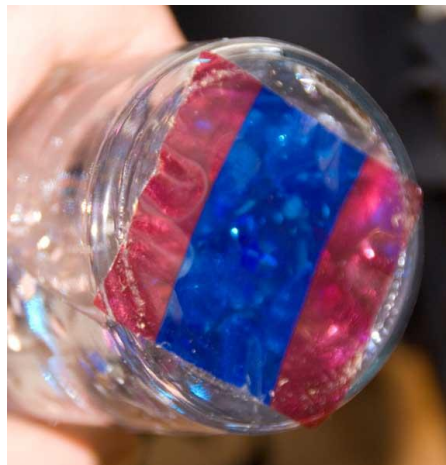
Other globe types included:

Model 642: Silver glitter, hot pink liquid (a few known).

Model 643: Silver glitter, blue liquid (one or two known).

Model 700: gold glitter, clear liquid, brass base (no examples known).

The *Mediterranean GemLite*. (Model 2970) Same base as the lava version, but with a GemLite globe).



Mediterranean GemLite

The **Capri GemLite**. Capri base and cap with a GemLite consort globe.



Capri GemLite

The *Capri Novelty GemLite*. Available with a “Coorz” or “11-Up” wrap around parody sticker on a silver colored base. Some collectors debate as to whether this was a model marketed directly by Lava Corp., or a Capri GemLite that was modified and marketed by a second, unknown company. So far, no mention of this lamp has been found in Lava Corp. literature of the day.



Capri Novelty GemLite

The *Consort GemLite*. The author has seen a picture of a square based Consort lamp with a GemLite globe. Factory literature doesn't list such a lamp. It may be an unknown variety, or perhaps someone stuck a globe from one of the other GemLite varieties into a standard square based Consort base.

The Windsor Glitter Lite (300 series). A Windsor lava lamp with slow moving fine particles suspended in a fairly thick liquid.

Glitter Lite

by LAVA

Twinkling, sparkling, scintillating Glitter Lite — like bits of tinted starlight floating in a brilliant sky! Glitter Lite provides light, motion and brilliant sparkling color. Everchanging, constant action. . . starts within two minutes. Makes a remarkable conversation piece with unlimited possibilities.

Modern styling . . . available in your choice of two distinctive models to complement any decor.

WINDSOR GLITTER LITE
300 Series

Contemporary design with continuous action in columnar splendor on a magnificent walnut grained laminated base with brushed gold finished parts. 17" high, 6" diameter. Individ. wt. 2 1/2 lbs. Master packed 6 to a case, 22 lbs.

Suggested Retail \$14.95

ENCHANTRESS GLITTER LITE
500 Series

Tall, elegant and graceful. The Enchantress lines flow delicately from a tapered cap to a gently pinched base. The satin chrome finished cap and base give it that modern flare. 16 1/2" high, 4 1/2" diam. Individ. wt. 4 1/2 lbs. Master packed 6 to a case, 26 1/2 lbs.

Suggested Retail \$18.95

Windsor — 300 Series
Enchantress — 500 Series
301/501 — Cold Liquid
302/502 — Silver Liquid
303/503 — Emerald Liquid
307/507 — Color Pak: Contains 2 each of the above colors



WINDSOR
300 Series

ENCHANTRESS
500 Series

LAVA-SIMPLEX
INTERNATIONALE, INC.
1650 W. IRVING PK. RD. • CHICAGO, ILL. 60613

1255-L-33

Printed in U.S.A.

The Consort Glitter Lite. (small, slow moving particles suspended in a thick fluid) are sometimes reported, but so far all have proven to be fake. They turned out to be basic square based Consorts with transplants from newer knock-off glitter lamps. At this point in time it's believed that standard square based *Consort Glitter Lites* were never produced by the factory.

The GemLamp. A 650 Confetti globe mounted in a table lamp style base. A very rare lamp, with only 2 known examples being seen.



A 1970's catalog showing the GemLamp (center)

Lava Lite
The light of a million moving shapes!

Lava Lite dazzles the imagination with its endless fascinating motion as it creates artistic, eye-pleasing, ever-changing patterns before your eyes. Soft, warm, friendly glow and graceful shape makes it a perfect decorator light, TV light, night light, accent light in your home or office. Distinctive, unique and attractive. The perfect gift . . . for yourself or for any occasion. AC/DC current. UL and CSA approved.

New! (B) "Windsor" Lava Lite

(A) The "Century". Contour styling. Light gleams through pierced satin brass finished base. 17x6" diam. *Specify:* Green lava/Blue liquid or Orange lava/Yellow liquid. 7½ lbs. 100A1995 Retail \$29.95

(B) The "Windsor". Contemporary design. Satin brass finish. Walnut-grain laminated base. 15x6" diam. *Specify:* Green lava/Blue liquid or Red lava/clear liquid. 4½ lbs. 2950A1595 Retail \$21.95

(C) Non-Electric. The "Continental" candle base model for use everywhere—indoors or out. It's cordless and carefree. Extra 60 hr. candle included. *Specify:* Yel. lava/Clear liquid, Orange lava/Yellow liquid or Red lava/Clear liquid. 14" h., 5½" dia. base. 5¼ lbs. Gift boxed. 3310A775 Retail \$10.95 3300A165 3 replacement candles in Gift Box Retail \$2.37

(D) Enchantress Glitter Lite. Like twinkling starlight floating in a brilliantly colored sky! Constant action starts in 2 minutes. Silver finished base and cap; 16½" high, 4½" diam. 4½ lbs. With gold, silver or emerald liquid. (Specify color). 500A1395. Ret. \$18.95

NEW! The Psychedelic sensation of the century! (E) KaleidoLite. Colored lights flickering through an invisible sleeve create countless shapes, colors and shadows. 14" high, 7" frosted glass globe, 5" sq. base in simulated walnut finish; gold finished metal parts. 2 lbs. 700A1095 Retail \$15.95

NEW!

(A) "Century" Lava Lite

1970 Foden's gift catalog ad showing the Windsor, Continental, and Kaleidolite lamps.

Rarity

The rarity ratings below are based on my years of collecting vintage lava lamps, as well as the opinions of other collectors.

Square walnut based Consort: **
Square plastic based Consort, hourglass stem: **
Square plastic based Consort, straight stem: ***
Nordic Consort (chrome finish, black faux wood plastic base): ***
Nordic Consort (metal base): ****
Executive Consort (similar to the Nordic lamp above, but brass colored): *****
Nordic Consort with a flared chrome base: *****
Nordic Consort with a trumpet flared faux wood metal base: *****
Nordic Consort (marbled base): *****
Child's Nite Lite (Clown Consort): ****
Pineapple textured Savoy or Continental: *****
4 legged Savoy or Continental: *****
Later frosted glass candle holder Savoy or Continental: ***
Continental models in their original box sets: *****
"Happy Occasion Pack" for later model Savoy: *****
Bulk packs of candle globes, metal bases, metal collars or lava globes for Savoy models: *****
Capri (either base color): ***
Princess: ****
Mediterranean lava lamp: ***
Windsor: ****
Meditation Series (aka Prayer Lite, either model): *****
Executive: *****
Expo ("Apollo") lamp: *****
Psyche-De-Lite: *****
Astro: ****
Confetti model 650: ***
Confetti model 642: ****
Confetti Model 643: ****
Confetti model 700: *****
Mediterranean GemLite: *****
Capri Gem lite: *****
Capri Novelty GemLite: *****
Windsor Glitter Lite: *****
GemLamp: *****

- * A very common lamp
- ** A lamp that's seen on a fairly regular basis
- *** A lamp that's seen once in awhile
- **** An uncommon lamp; quite hard to find
- ***** A very rare lamp. Rarely (or never) seen in any condition